

# Medicine for Members' Meeting



**23<sup>rd</sup> April 2019**

- **Welcome & Introductions**
- **Changes to the Front Door and the ED Footprint**
- **Clinical Standards Update**
- **IOW Governor for Council of Governors at University Hospital Southampton**
- **Q & A**

## **2019 Meetings - Save the Date**

- **Wednesday 10<sup>th</sup> July**
- **Tuesday 17<sup>th</sup> September**
- **Tuesday 12<sup>th</sup> November**



# ‘Changes to the front door and the Emergency Department footprint’



- **Emergency Department**
  - Children & Young people in the emergency setting
  - Clinical Decision Unit
  - Immediate Assessment & Triage
- **Urgent Treatment Centre (UTC)**
- **Same Day Emergency Care (SDEC)**



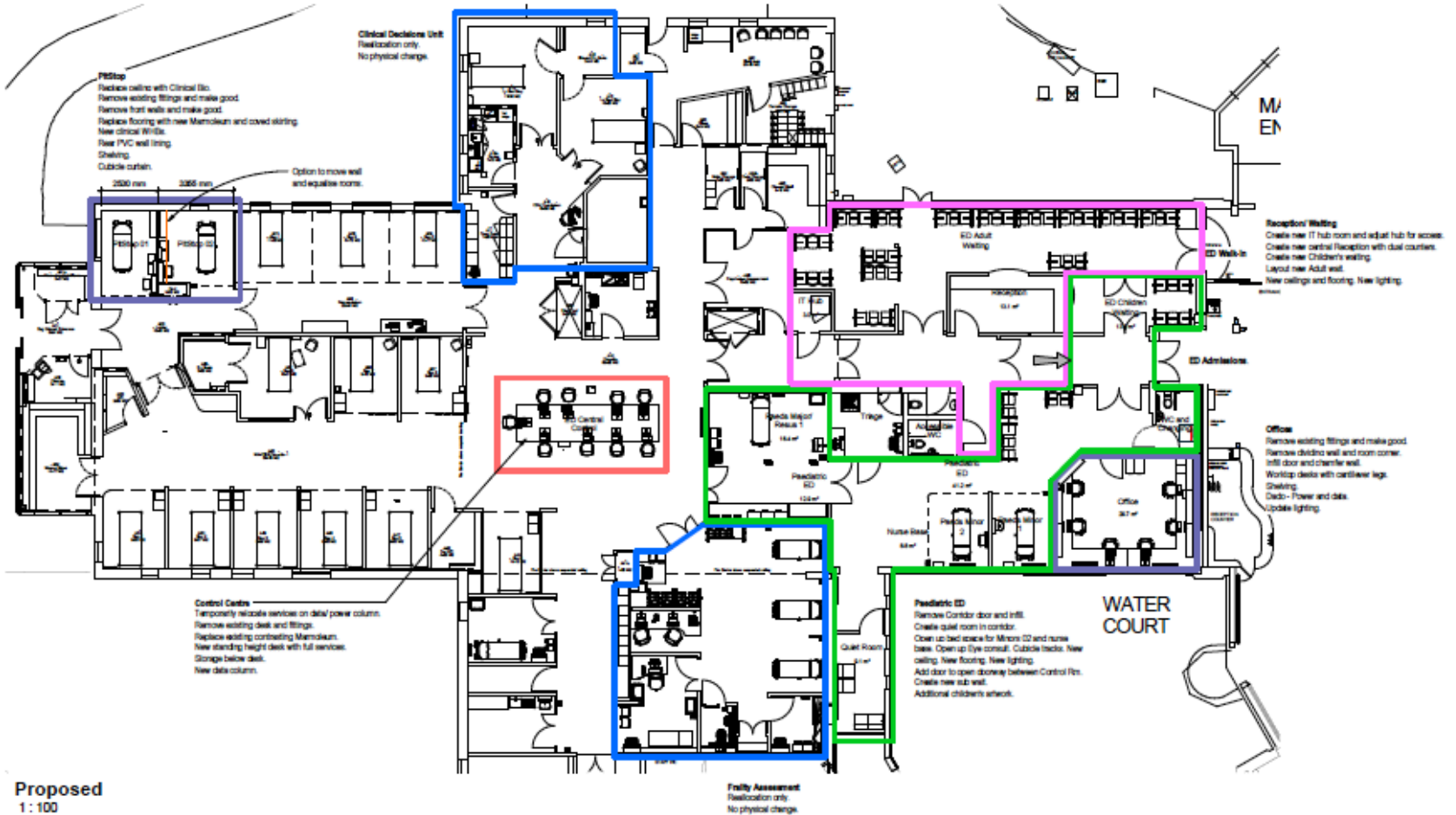
# Urgent Treatment Centres

- **Urgent treatment centres (UTCs) are GP-led, open at least 12 hours a day, every day, offer appointments that can be booked through 111 or through a GP referral, and are equipped to diagnose and deal with many of the most common ailments people attend A&E for.**
- **UTCs will also ease the pressure on hospitals, leaving other parts of the system free to treat the most serious cases.**
- **GP's, Advanced Practitioners**
- **Links to 111 – Integrated Urgent Care**
  - **Minor ailment**
  - **Minor injury**
  - **Primary care**
  - **Location**



# Same Day Emergency Care

- **A significant proportion of adult patients requiring emergency care can be managed safely and appropriately on the same day either without admission to a hospital bed at all, or through admission for only a few hours.**
- **Acute Headache, Anaemia, Asthma, Falls including syncope or collapse, Low risk chest pain, Abscess, Acute abdo pain**
- **Seeing c. 12 patients a day Mon to Fri in first phase**
- **Trolleys & chairs**



Proposed  
1:100