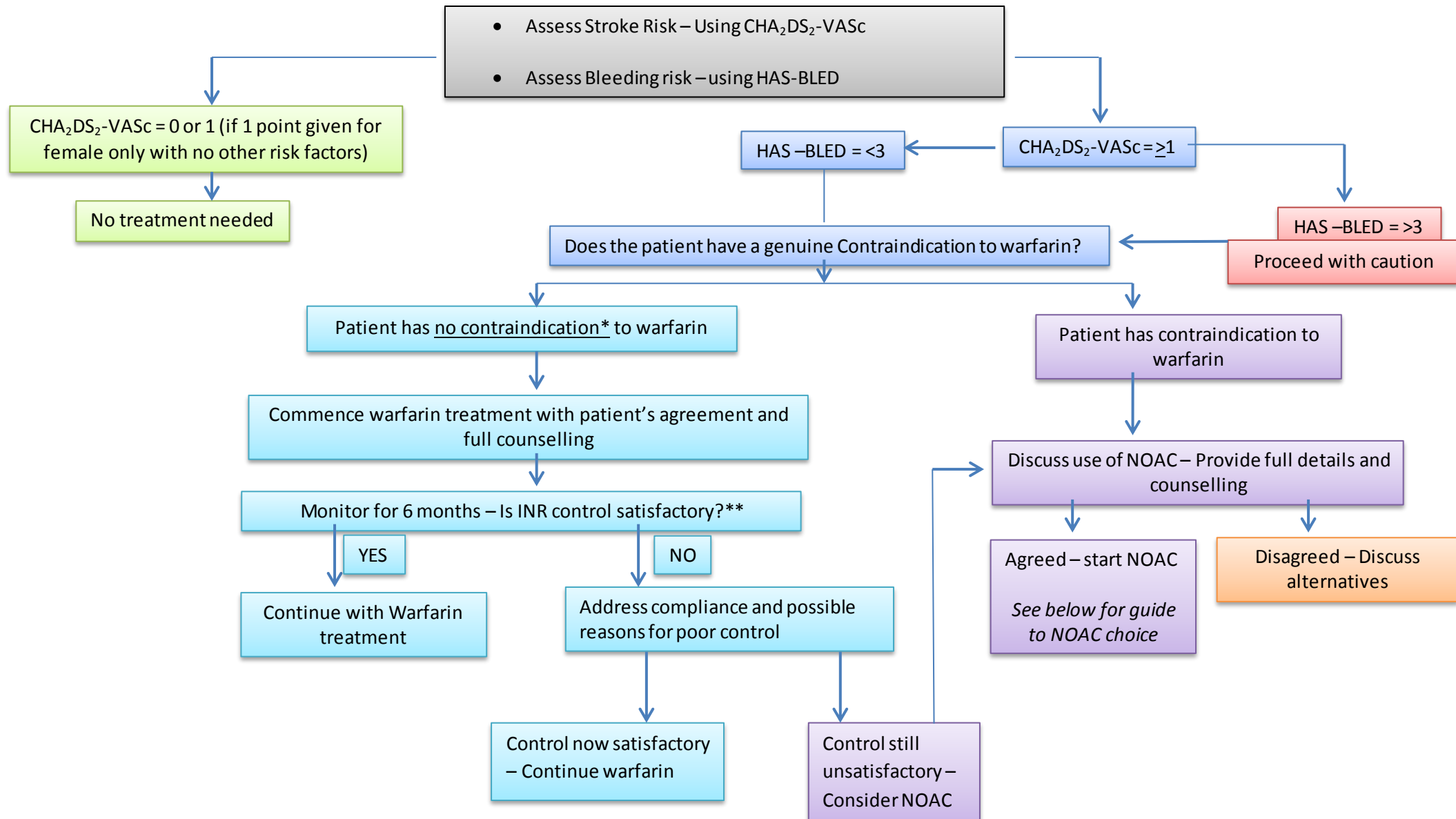


**Stroke Prevention in Non –Valvular Atrial fibrillation Treatment Pathway**



## \*Contraindications for warfarin

- True allergy or proven major intolerance

## Cautions and considerations for warfarin

- Difficulty with Venepuncture (GP practices offer fingertip prick tests)
- Newly diagnosed AF for cardioversion/ablation

## \*\*SATISFACTORY INR CONTROL

- Percentage time INR in range > 60%
- Not more than 3 episodes of INR > 5 in the last three months
- Not more than 2 episodes of INR > 10 in the last three months
- No episode of significant bleeding on VKA in the last 12 months
- No episodes of life threatening or intracranial bleeding while VKA

